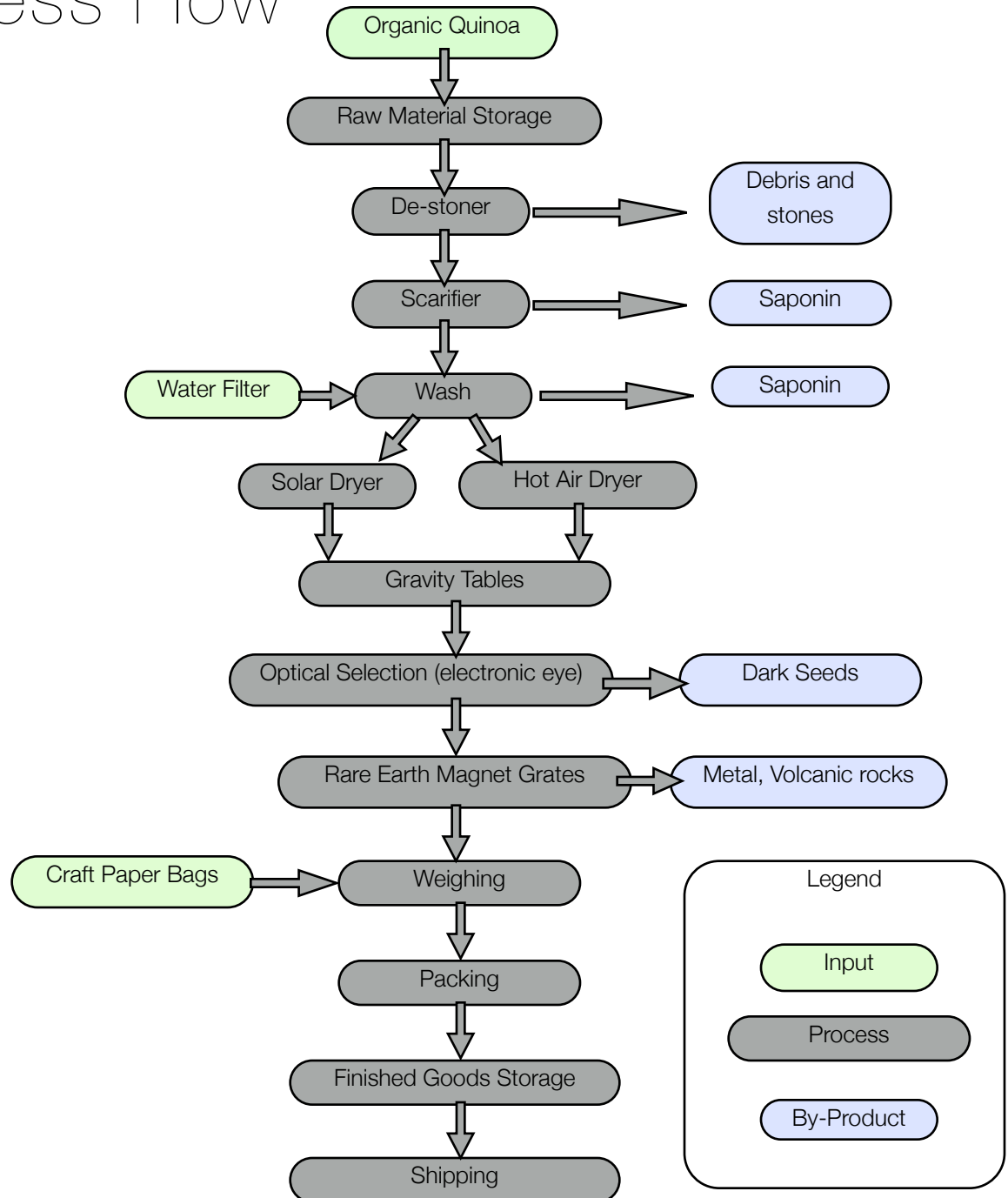




Royal Quinoa Process Flow



125 Channing Road
Burlingame, CA. 94010
T 888.547.9777
F 707.202.2838
info@andeannaturals.com
www.andeannaturals.com



Royal Quinoa

Process Flow

Critical Control Points:

1. Receiving and Lotting according to Organic origin norms. Visual inspection of quality of lots.
2. Desaponification method favors seed-to-seed friction. Visual controls to prevent erosion of pericarp.
3. Microbiological testing of filtered water
4. Test-tube post- washing to test saponin levels
5. Humidity testing with electronic equipment
6. Visual controls on classification
7. Rare Earth magnets pick up stones, impurities and metals. Visual checks to verify that amount of impurities per metric ton is below thresholds.
8. Final manual checking for impurities
9. Random sampling and independent lab testing (microbiological, purity and humidity)
10. For all equipment, prior to processing: visual inspection and dry cleaning